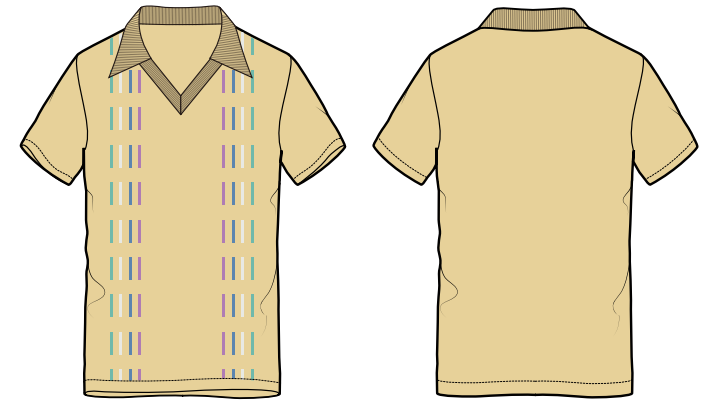


Date: 3 Aug. 2016

Style No. 1-002
 Season: Summer
 Style: V-neck Polo Tee in light yellow
 Washing:
 Label:

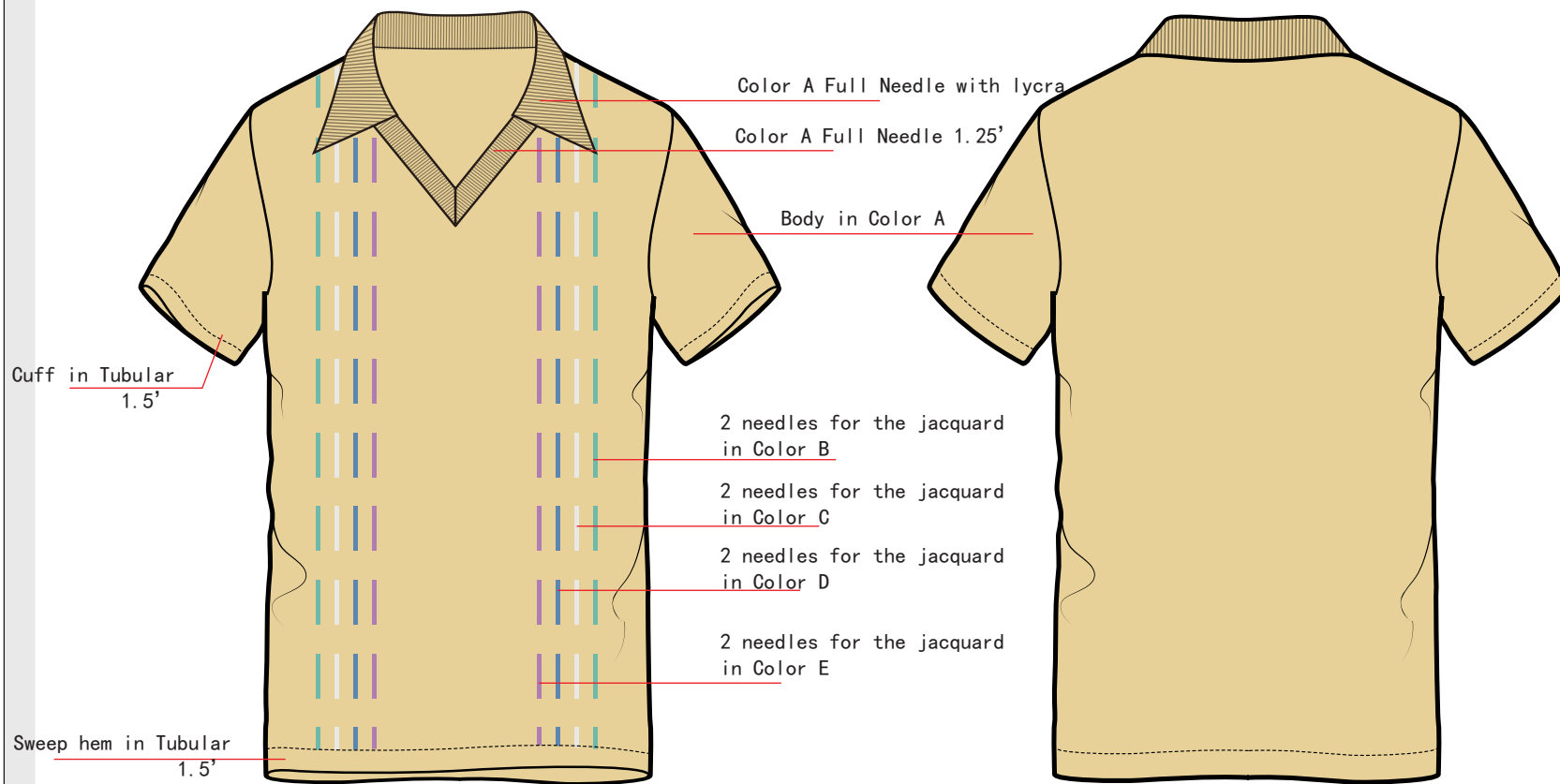
Yarn: 30s/2 100%visicore Rayon
 12gg 2ends
 Zipper: nil
 Accessories: Button: nil



Measurement (inch)

	XXL																				
1 Body length from HPS	29"																				
2 Bust/ Chest	25"																				
3 Waist (14.5' from HPS)	26.5"																				
4 Sweep	26.5"																				
5 Shoulder (seam to seam)	23"																				
6 Sleeve length	8"																				
7 Cuff height (Tubular)	1.5"																				
8 Cuff opening weigh	9"																				
9 Armhole Depth	10.5"																				
10 Sweep Hem Height (Tubular)	2"																				
11 Neck width (seam to seam)	9"																				
12 Front neck drop (to seam)	6"																				
13 Back neck drop (to seam)	0.5"																				
14 Collar height	2.5"																				
15 Collar point (Full needle)	5"																				
16 Placket width	1.25"																				
17																					
18																					
19																					
20																					
21																					
22																					
23																					
24																					
25																					
26																					
27																					
28																					

Technical instruction:
 1. Front panel knitted in bird-eyes jacquard, back panel and sleeves in single jersey.
 2. Collar knitted in full needle with 1/40d lycra added
 3. 2 needles for linking



Body Color

A-Light yellow: L830

B-Lake green: L817

C-White: L841

D-Sky blue: 856

E-Pastel purple: 828

Season:

Style No: **1-002**

Date: 03/08/2016

Description:

Note:

The drawing is for showing design intention only.

Suppliers to submit proto samples, technical specification and fitting detail for comments and approval prior to commencement of production.

Date: 3 Aug. 2016

Style No. 5-004

Yarn: 30s/2 100%visicore Rayon
12gg 2ends

Season: Summer

Zipper: nil

Style: Open sweatshirt with jacquard pattern

Accessories
Button: 7pcs in color A

Washing:

Label:

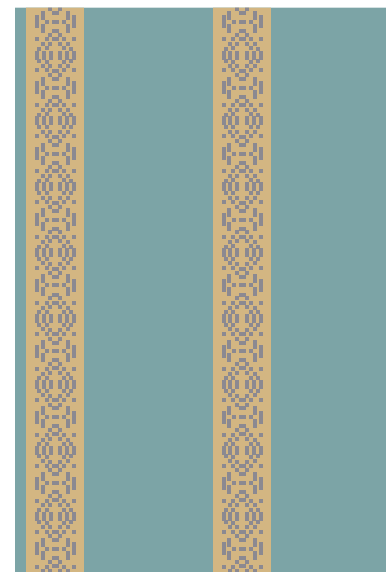


Measurement (inch)

	L																			
1	Body length from HPS	25"																		
2	Bust/ Chest	22"																		
3	Waist (14.5' from HPS)	21.5"																		
4	Sweep	21.5"																		
5	Sleeve length(from HPS)	15"																		
6	Cuff height (Tubular)	1.5"																		
7	Cuff opening weigh	9"																		
8	Armhole Depth	9.5"																		
9	Sweep Hem Height (Tubular)	2.5"																		
10	Neck width (seam to seam)	7.5"																		
11	Front neck drop (to seam)	3"																		
12	Back neck drop (to seam)	0.5"																		
13	Collar height (1X1Rib)	1"																		
14	Placket width (Tubular)	1.25"																		
15																				
16																				
17																				
18																				
19																				
20																				
21																				
22																				
23																				
24																				
25																				
26																				
27																				
28																				

Technical instruction:

1. Front Body in jacquard, back panel and sleeves in single jersey (Color A).
2. Front jacquard presented as production drawing.
3. Full needle collar added with 1end of lycra.



Linking at center back collar with tubular

shoulder yoke from back 1 1/4"

Collar in Full needle

Body in Color A

1 1/2" Tubular

Color B

1 1/4" Placket

Argyle in Jacquard Color C

Button in Color A

2" Tubular

2 1/2" Splite at side seam

Body Color

A-Beige

B-Lake blue

C-Silver grey

Season:

Style No: **5-004**

Date: 03/08/2016

Description:

Note:

The drawing is for showing design intention only.

Suppliers to submit proto samples, technical specification and fitting detail for comments and approval prior to commencement of production.